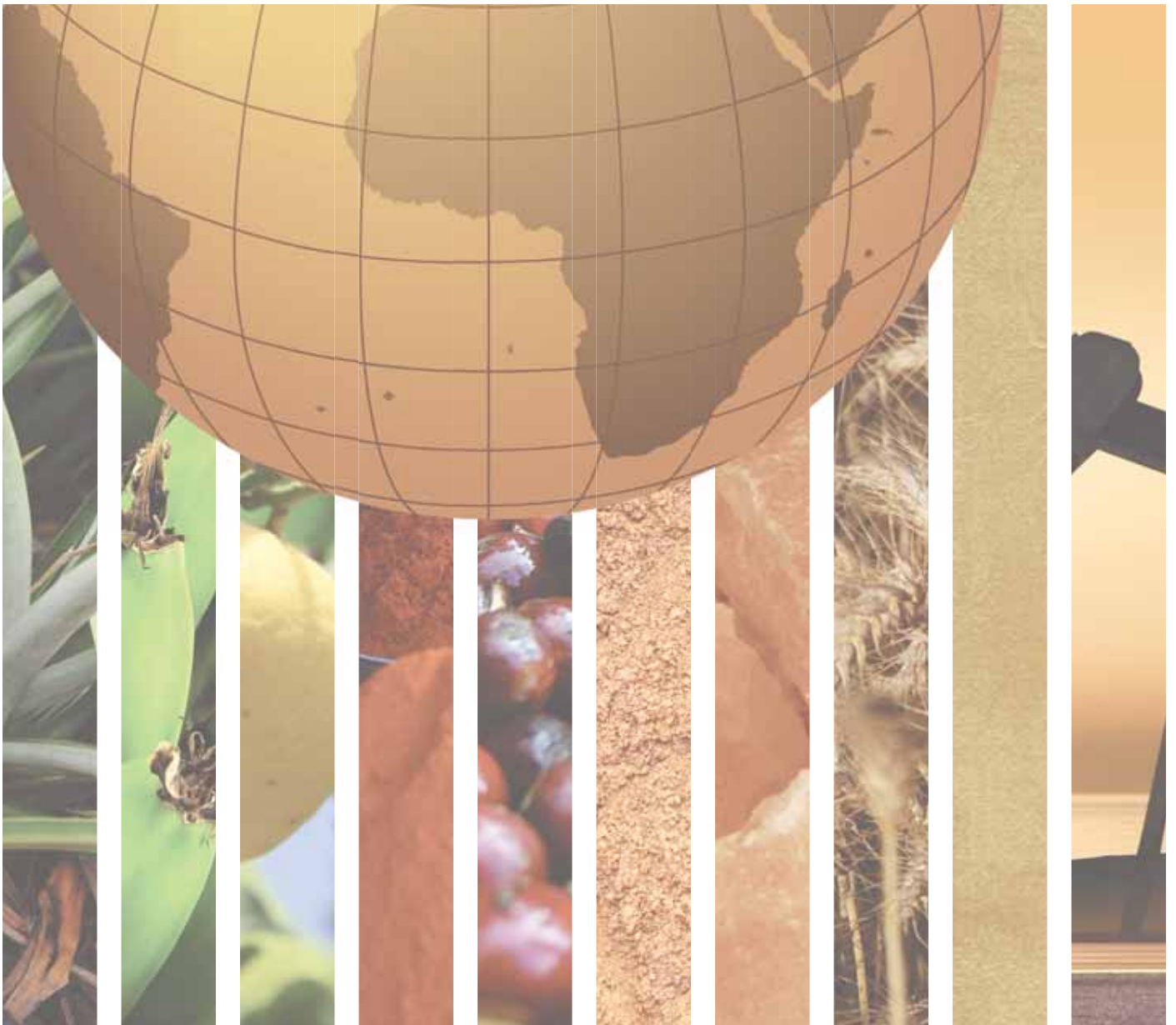


# CARIBBEAN





ANGUILLA		ANTIGUA AND BARBUDA	
GENERAL INFORMATION		GENERAL INFORMATION	
Total area (square kilometres), 2009	90	Total area (square kilometres), 2009	440
Agricultural area (as a percentage of total area), 2009	-	Agricultural area (as a percentage of total area), 2009	30
Population (1,000 inhabitants), 2010	15	Population (1,000 inhabitants), 2010	89
Labour force (1,000 workers), 2010	7	Labour force (1,000 workers), 2010	39
Women in labour force (as a percentage of total labour force), 2010	43	Women in labour force (as a percentage of total labour force), 2010	41
Labour force in agriculture (as a percentage of total labour force), 2010	14	Labour force in agriculture (as a percentage of total labour force), 2010	21
Women in agriculture (as a percentage of labour force in agriculture), 2010	-	Women in agriculture (as a percentage of labour force in agriculture), 2010	25
Gross Domestic Product (GDP) (in millions of US\$), 2010	224	Gross Domestic Product (GDP) (in millions of US\$), 2010	1,118
GDP by economic activity (as a percentage of GDP), 2009 (agriculture / industry / services)	2/23/75	GDP by economic activity (as a percentage of GDP), 2009 (agriculture / industry / services)	3/26/71
COMMODITY EXPORT DEPENDENCE		COMMODITY EXPORT DEPENDENCE	
Commodity exports (in millions of US\$ and as a percentage of merchandise exports), 2009-2010	4.3 (25%)	Commodity exports (in millions of US\$ and as a percentage of merchandise exports), 2009-2010	3.6 (10%)
Commodity exports (as a percentage of GDP), 2009-2010	0.3	Commodity exports (as a percentage of GDP), 2009-2010	0.3
Exports by commodity groups (as a percentage of total commodity exports), 2009-2010		Exports by commodity groups (as a percentage of total commodity exports), 2009-2010	
All food items	85	All food items	63
Agricultural raw materials	1	Agricultural raw materials	9
Fuels	-	Fuels	20
Ores, metals, precious stones and non-monetary gold	14	Ores, metals, precious stones and non-monetary gold	8
Three leading commodity exports (as a percentage of commodity exports), 2009-2010	69	Three leading commodity exports (as a percentage of commodity exports), 2009-2010	35
(112) Alcoholic beverages	53	(091) Margarine and shortening	19
(059) Fruit and vegetable juices, unfermented, no spirit	10	(334) Petroleum oils or bituminous minerals > 70 % oil	11
(684) Aluminium	6	(03) Fishery products	5
Leading destination markets for commodity exports (as a percentage of commodity exports), 2009-2010	99	Leading destination markets for commodity exports (as a percentage of commodity exports), 2009-2010	92
EU (27), Mexico, Guyana, United States	31/26/26/16	Nigeria, EU (27), Republic of Korea, Guyana, Netherlands Antilles	68/13/7/2/2
Export concentration ratio	(2000) 0.2354 (2010) 0.4499	Export concentration ratio	(2000) 0.5823 (2010) 0.1140
Membership in international commodity bodies	-	Membership in international commodity bodies	-
FOOD SECURITY		FOOD SECURITY	
Commodity import value (in millions of US\$ and as a percentage of merchandise import value), 2009-2010	28 (17%)	Commodity import value (in millions of US\$ and as a percentage of merchandise import value), 2009-2010	101 (22%)
Net food imports (in millions of US\$), 2010	18	Net food imports (in millions of US\$), 2010	37
MDG 1.1: Percentage of population below 1US\$ (PPP) per day, 1990/92 and 2007/09	n.a.	MDG 1.1: Percentage of population below 1US\$ (PPP) per day, 1990/92 and 2007/09	n.a.
MDG 1.9: Percentage of the population undernourished, 1991 and 2007	n.a.	MDG 1.9: Percentage of the population undernourished, 1991 and 2007	12 - 21



ARUBA		BAHAMAS	
GENERAL INFORMATION		GENERAL INFORMATION	
Total area (square kilometres), 2009	180	Total area (square kilometres), 2009	13,880
Agricultural area (as a percentage of total area), 2009	11	Agricultural area (as a percentage of total area), 2009	1
Population (1,000 inhabitants), 2010	107	Population (1,000 inhabitants), 2010	343
Labour force (1,000 workers), 2010	46	Labour force (1,000 workers), 2010	185
Women in labour force (as a percentage of total labour force), 2010	43	Women in labour force (as a percentage of total labour force), 2010	48
Labour force in agriculture (as a percentage of total labour force), 2010	20	Labour force in agriculture (as a percentage of total labour force), 2010	3
Women in agriculture (as a percentage of labour force in agriculture), 2010	22	Women in agriculture (as a percentage of labour force in agriculture), 2010	–
Gross Domestic Product (GDP) (in millions of US\$), 2010	2,611	Gross Domestic Product (GDP) (in millions of US\$), 2010	7,232
GDP by economic activity (as a percentage of GDP), 2009 (agriculture / industry / services)	0/20/79	GDP by economic activity (as a percentage of GDP), 2009 (agriculture / industry / services)	2/18/80
COMMODITY EXPORT DEPENDENCE		COMMODITY EXPORT DEPENDENCE	
Commodity exports (in millions of US\$ and as a percentage of merchandise exports), 2009-2010	797 (95%)	Commodity exports (in millions of US\$ and as a percentage of merchandise exports), 2009-2010	389 (57%)
Commodity exports (as a percentage of GDP), 2009-2010	30	Commodity exports (as a percentage of GDP), 2009-2010	5
Exports by commodity groups (as a percentage of total commodity exports), 2009-2010		Exports by commodity groups (as a percentage of total commodity exports), 2009-2010	
All food items	12	All food items	18
Agricultural raw materials	–	Agricultural raw materials	1
Fuels	85	Fuels	75
Ores, metals, precious stones and non-monetary gold	3	Ores, metals, precious stones and non-monetary gold	6
Three leading commodity exports (as a percentage of commodity exports), 2009-2010	91	Three leading commodity exports (as a percentage of commodity exports), 2009-2010	90
(334) Petroleum oils or bituminous minerals > 70 % oil	81	(334) Petroleum oils or bituminous minerals > 70 % oil	73
(112) Alcoholic beverages	7	(112) Alcoholic beverages	10
(122) Tobacco, manufactured	3	(03) Fishery products	7
Leading destination markets for commodity exports (as a percentage of commodity exports), 2009-2010	82	Leading destination markets for commodity exports (as a percentage of commodity exports), 2009-2010	91
United States, EU (27), Brazil, Colombia, Panama	55/11/7/5/4	United States, Singapore, EU (27), Dominican Republic, Guatemala	39/30/12/8/2
Export concentration ratio	(2000) 0.8101 (2010) 0.3945	Export concentration ratio	(2000) 0.2732 (2010) 0.4189
Membership in international commodity bodies	–	Membership in international commodity bodies	–
FOOD SECURITY		FOOD SECURITY	
Commodity import value (in millions of US\$ and as a percentage of merchandise import value), 2009-2010	702 (44%)	Commodity import value (in millions of US\$ and as a percentage of merchandise import value), 2009-2010	1,180 (43%)
Net food imports (in millions of US\$), 2010	179	Net food imports (in millions of US\$), 2010	447
MDG 1.1: Percentage of population below 1US\$ (PPP) per day, 1990/92 and 2007/09	n.a.	MDG 1.1: Percentage of population below 1US\$ (PPP) per day, 1990/92 and 2007/09	n.a.
MDG 1.9: Percentage of the population undernourished, 1991 and 2007	n.a.	MDG 1.9: Percentage of the population undernourished, 1991 and 2007	7 - 6



<b>BARBADOS</b>		<b>BRITISH VIRGIN ISLANDS</b>	
<b>GENERAL INFORMATION</b>		<b>GENERAL INFORMATION</b>	
Total area (square kilometres), 2009	430	Total area (square kilometres), 2009	150
Agricultural area (as a percentage of total area), 2009	44	Agricultural area (as a percentage of total area), 2009	47
Population (1,000 inhabitants), 2010	273	Population (1,000 inhabitants), 2010	23
Labour force (1,000 workers), 2010	165	Labour force (1,000 workers), 2010	10
Women in labour force (as a percentage of total labour force), 2010	47	Women in labour force (as a percentage of total labour force), 2010	40
Labour force in agriculture (as a percentage of total labour force), 2010	2	Labour force in agriculture (as a percentage of total labour force), 2010	20
Women in agriculture (as a percentage of labour force in agriculture), 2010	50	Women in agriculture (as a percentage of labour force in agriculture), 2010	50
Gross Domestic Product (GDP) (in millions of US\$), 2010	3,658	Gross Domestic Product (GDP) (in millions of US\$), 2009	1,328
GDP by economic activity (as a percentage of GDP), 2009 (agriculture / industry / services)	3/17/80	GDP by economic activity (as a percentage of GDP), 2009 (agriculture / industry / services)	1/11/88
<b>COMMODITY EXPORT DEPENDENCE</b>		<b>COMMODITY EXPORT DEPENDENCE</b>	
Commodity exports (in millions of US\$ and as a percentage of merchandise exports), 2009-2010	132 (33%)	Commodity exports (in millions of US\$ and as a percentage of merchandise exports), 2009-2010	n.a.
Commodity exports (as a percentage of GDP), 2009-2010	4	Commodity exports (as a percentage of GDP), 2008-2009	n.a.
Exports by commodity groups (as a percentage of total commodity exports), 2009-2010		Exports by commodity groups (as a percentage of total commodity exports), 2009-2010	
All food items	65	All food items	n.a.
Agricultural raw materials	1	Agricultural raw materials	n.a.
Fuels	31	Fuels	n.a.
Ores, metals, precious stones and non-monetary gold	3	Ores, metals, precious stones and non-monetary gold	n.a.
Three leading commodity exports (as a percentage of commodity exports), 2009-2010	48	Three leading commodity exports (as a percentage of commodity exports), 2009-2010	n.a.
(333) Petroleum oils, oils from bitumin. materials, crude	21	no information available	n.a.
(112) Alcoholic beverages	19		
(334) Petroleum oils or bituminous minerals > 70 % oil	8		
Leading destination markets for commodity exports (as a percentage of commodity exports), 2009-2010	69	Leading destination markets for commodity exports (as a percentage of commodity exports), 2009-2010	n.a.
Nigeria, Brazil, EU (27), Trinidad and Tobago, United States	18/16/15/12/8	no information available	n.a.
Export concentration ratio	(2000) 0.1714 (2010) 0.1352	Export concentration ratio	(2000) 0.3810 (2010) n.a.
Membership in international commodity bodies	ISO	Membership in international commodity bodies	–
<b>FOOD SECURITY</b>		<b>FOOD SECURITY</b>	
Commodity import value (in millions of US\$ and as a percentage of merchandise import value), 2009-2010	769 (54%)	Commodity import value (in millions of US\$ and as a percentage of merchandise import value), 2009-2010	n.a.
Net food imports (in millions of US\$), 2010	272	Net food imports (in millions of US\$), 2010	n.a.
MDG 1.1: Percentage of population below 1US\$ (PPP) per day, 1990/92 and 2007/09	n.a.	MDG 1.1: Percentage of population below 1US\$ (PPP) per day, 1990/92 and 2007/09	n.a.
MDG 1.9: Percentage of the population undernourished, 1991 and 2007	5 - 5	MDG 1.9: Percentage of the population undernourished, 1991 and 2007	n.a.



CAYMAN ISLANDS		CUBA	
GENERAL INFORMATION		GENERAL INFORMATION	
Total area (square kilometres), 2009	260	Total area (square kilometres), 2009	109,890
Agricultural area (as a percentage of total area), 2009	10	Agricultural area (as a percentage of total area), 2009	61
Population (1,000 inhabitants), 2010	56	Population (1,000 inhabitants), 2010	11,258
Labour force (1,000 workers), 2010	24	Labour force (1,000 workers), 2010	5,268
Women in labour force (as a percentage of total labour force), 2010	42	Women in labour force (as a percentage of total labour force), 2010	40
Labour force in agriculture (as a percentage of total labour force), 2010	21	Labour force in agriculture (as a percentage of total labour force), 2010	11
Women in agriculture (as a percentage of labour force in agriculture), 2010	20	Women in agriculture (as a percentage of labour force in agriculture), 2010	18
Gross Domestic Product (GDP) (in millions of US\$), 2009	3,078	Gross Domestic Product (GDP) (in millions of US\$), 2009	60,917
GDP by economic activity (as a percentage of GDP), 2009 (agriculture / industry / services)	-/9/91	GDP by economic activity (as a percentage of GDP), 2009 (agriculture / industry / services)	5/20/75
COMMODITY EXPORT DEPENDENCE		COMMODITY EXPORT DEPENDENCE	
Commodity exports (in millions of US\$ and as a percentage of merchandise exports), 2009-2010	0.8 (5%)	Commodity exports (in millions of US\$ and as a percentage of merchandise exports), 2009-2010	2,296 (77%)
Commodity exports (as a percentage of GDP), 2008-2009	0.02	Commodity exports (as a percentage of GDP), 2008-2009	4
Exports by commodity groups (as a percentage of total commodity exports), 2009-2010		Exports by commodity groups (as a percentage of total commodity exports), 2009-2010	
All food items	19	All food items	48
Agricultural raw materials	1	Agricultural raw materials	1
Fuels	50	Fuels	6
Ores, metals, precious stones and non-monetary gold	31	Ores, metals, precious stones and non-monetary gold	44
Three leading commodity exports (as a percentage of commodity exports), 2009-2010	72	Three leading commodity exports (as a percentage of commodity exports), 2009-2010	77
(334) Petroleum oils or bituminous minerals > 70 % oil	31	(284) Nickel ores & concentrates; nickel mattes, etc.	43
(667) Pearls, precious & semi-precious stones	24	(061) Sugar, molasses and honey	23
(321) Coal, whether or not pulverized, not agglomerated	17	(122) Tobacco, manufactured	11
Leading destination markets for commodity exports (as a percentage of commodity exports), 2009-2010	92	Leading destination markets for commodity exports (as a percentage of commodity exports), 2009-2010	86
Guyana, EU (27), Malaysia, United States, Colombia	32/24/17/17/2	China, EU (27), Canada, Russian Federation, Belize	38/26/16/3/3
Export concentration ratio	(2000) 0.8397 (2010) 0.7424	Export concentration ratio	(2000) 0.3541 (2010) 0.4087
Membership in international commodity bodies	–	Membership in international commodity bodies	INBAR, ICO, IGC, INSG, ISO
FOOD SECURITY		FOOD SECURITY	
Commodity import value (in millions of US\$ and as a percentage of merchandise import value), 2009-2010	146 (17%)	Commodity import value (in millions of US\$ and as a percentage of merchandise import value), 2009-2010	4,542 (44%)
Net food imports (in millions of US\$), 2010	40	Net food imports (in millions of US\$), 2010	735
MDG 1.1: Percentage of population below 1US\$ (PPP) per day, 1990/92 and 2007/09	n.a.	MDG 1.1: Percentage of population below 1US\$ (PPP) per day, 1990/92 and 2007/09	n.a.
MDG 1.9: Percentage of the population undernourished, 1991 and 2007	n.a.	MDG 1.9: Percentage of the population undernourished, 1991 and 2007	6 - 5



<b>DOMINICA</b>		<b>DOMINICAN REPUBLIC</b>	
<b>GENERAL INFORMATION</b>		<b>GENERAL INFORMATION</b>	
Total area (square kilometres), 2009	750	Total area (square kilometres), 2009	48,670
Agricultural area (as a percentage of total area), 2009	33	Agricultural area (as a percentage of total area), 2009	51
Population (1,000 inhabitants), 2010	68	Population (1,000 inhabitants), 2010	9,927
Labour force (1,000 workers), 2010	29	Labour force (1,000 workers), 2010	4,359
Women in labour force (as a percentage of total labour force), 2010	41	Women in labour force (as a percentage of total labour force), 2010	45
Labour force in agriculture (as a percentage of total labour force), 2010	21	Labour force in agriculture (as a percentage of total labour force), 2010	10
Women in agriculture (as a percentage of labour force in agriculture), 2010	17	Women in agriculture (as a percentage of labour force in agriculture), 2010	31
Gross Domestic Product (GDP) (in millions of US\$), 2010	392	Gross Domestic Product (GDP) (in millions of US\$), 2010	51,570
GDP by economic activity (as a percentage of GDP), 2009 (agriculture / industry / services)	18/21/61	GDP by economic activity (as a percentage of GDP), 2009 (agriculture / industry / services)	6/31/63
<b>COMMODITY EXPORT DEPENDENCE</b>		<b>COMMODITY EXPORT DEPENDENCE</b>	
Commodity exports (in millions of US\$ and as a percentage of merchandise exports), 2009-2010	14 (42%)	Commodity exports (in millions of US\$ and as a percentage of merchandise exports), 2009-2010	1,961 (33%)
Commodity exports (as a percentage of GDP), 2009-2010	4	Commodity exports (as a percentage of GDP), 2009-2010	4
Exports by commodity groups (as a percentage of total commodity exports), 2009-2010		Exports by commodity groups (as a percentage of total commodity exports), 2009-2010	
All food items	77	All food items	78
Agricultural raw materials	–	Agricultural raw materials	2
Fuels	–	Fuels	3
Ores, metals, precious stones and non-monetary gold	23	Ores, metals, precious stones and non-monetary gold	17
Three leading commodity exports (as a percentage of commodity exports), 2009-2010	88	Three leading commodity exports (as a percentage of commodity exports), 2009-2010	42
(057) Fruits and nuts (excluding oil nuts), fresh or dried	51	(122) Tobacco, manufactured	18
(273) Stone, sand and gravel	23	(057) Fruits and nuts (excluding oil nuts), fresh or dried	16
(054) Vegetables	14	(072) Cocoa	8
Leading destination markets for commodity exports (as a percentage of commodity exports), 2009-2010	92	Leading destination markets for commodity exports (as a percentage of commodity exports), 2009-2010	90
EU (27), Antigua and Barbuda, Saint Kitts and Nevis, British Virgin Islands, Montserrat	52/24/11/3/2	United States, EU (27), Haiti, China, Canada	48/26/11/4/1
Export concentration ratio	(2000) 0.3946 (2010) 0.3681	Export concentration ratio	(2000) 0.2241 (2010) 0.1398
Membership in international commodity bodies	–	Membership in international commodity bodies	ICCO, ISO
<b>FOOD SECURITY</b>		<b>FOOD SECURITY</b>	
Commodity import value (in millions of US\$ and as a percentage of merchandise import value), 2009-2010	93 (42%)	Commodity import value (in millions of US\$ and as a percentage of merchandise import value), 2009-2010	5,188 (39%)
Net food imports (in millions of US\$), 2010	43	Net food imports (in millions of US\$), 2010	482
MDG 1.1: Percentage of population below 1US\$ (PPP) per day, 1990/92 and 2007/09	n.a.	MDG 1.1: Percentage of population below 1US\$ (PPP) per day, 1990/92 and 2007/09	5 - 4
MDG 1.9: Percentage of the population undernourished, 1991 and 2007	5 - 5	MDG 1.9: Percentage of the population undernourished, 1991 and 2007	28 - 24



GRENADA		HAITI	
GENERAL INFORMATION		GENERAL INFORMATION	
Total area (square kilometres), 2009	340	Total area (square kilometres), 2009	27,750
Agricultural area (as a percentage of total area), 2009	37	Agricultural area (as a percentage of total area), 2009	66
Population (1,000 inhabitants), 2010	104	Population (1,000 inhabitants), 2010	9,993
Labour force (1,000 workers), 2010	46	Labour force (1,000 workers), 2010	3,870
Women in labour force (as a percentage of total labour force), 2010	39	Women in labour force (as a percentage of total labour force), 2010	33
Labour force in agriculture (as a percentage of total labour force), 2010	20	Labour force in agriculture (as a percentage of total labour force), 2010	59
Women in agriculture (as a percentage of labour force in agriculture), 2010	22	Women in agriculture (as a percentage of labour force in agriculture), 2010	25
Gross Domestic Product (GDP) (in millions of US\$), 2010	664	Gross Domestic Product (GDP) (in millions of US\$), 2010	6,218
GDP by economic activity (as a percentage of GDP), 2009 (agriculture / industry / services)	6/16/78	GDP by economic activity (as a percentage of GDP), 2009 (agriculture / industry / services)	27/24/50
COMMODITY EXPORT DEPENDENCE		COMMODITY EXPORT DEPENDENCE	
Commodity exports (in millions of US\$ and as a percentage of merchandise exports), 2009-2010	14 (51%)	Commodity exports (in millions of US\$ and as a percentage of merchandise exports), 2009-2010	59 (12%)
Commodity exports (as a percentage of GDP), 2009-2010	2	Commodity exports (as a percentage of GDP), 2009-2010	1
Exports by commodity groups (as a percentage of total commodity exports), 2009-2010		Exports by commodity groups (as a percentage of total commodity exports), 2009-2010	
All food items	99	All food items	71
Agricultural raw materials	1	Agricultural raw materials	11
Fuels	–	Fuels	–
Ores, metals, precious stones and non-monetary gold	–	Ores, metals, precious stones and non-monetary gold	18
Three leading commodity exports (as a percentage of commodity exports), 2009-2010	69	Three leading commodity exports (as a percentage of commodity exports), 2009-2010	49
(046) Meal and flour of wheat and flour of meslin	32	(071) Coffee and coffee substitutes	18
(03) Fishery products	21	(057) Fruits and nuts (excluding oil nuts), fresh or dried	16
(075) Spices	16	(072) Cocoa	15
Leading destination markets for commodity exports (as a percentage of commodity exports), 2009-2010	79	Leading destination markets for commodity exports (as a percentage of commodity exports), 2009-2010	90
United States, EU (27), Saint Lucia, Dominica, Saint Kitts and Nevis	23/16/14/14/12	United States, EU (27), China, Canada, Thailand	43/23/9/9/6
Export concentration ratio	(2000) 0.3095 (2010) 0.2120	Export concentration ratio	(2000) 0.4580 (2010) 0.4910
Membership in international commodity bodies	–	Membership in international commodity bodies	–
FOOD SECURITY		FOOD SECURITY	
Commodity import value (in millions of US\$ and as a percentage of merchandise import value), 2009-2010	123 (41%)	Commodity import value (in millions of US\$ and as a percentage of merchandise import value), 2009-2010	1,411 (53%)
Net food imports (in millions of US\$), 2010	58	Net food imports (in millions of US\$), 2010	1,420
MDG 1.1: Percentage of population below 1US\$ (PPP) per day, 1990/92 and 2007/09	n.a.	MDG 1.1: Percentage of population below 1US\$ (PPP) per day, 1990/92 and 2007/09	n.a. - 55
MDG 1.9: Percentage of the population undernourished, 1991 and 2007	13 - 21	MDG 1.9: Percentage of the population undernourished, 1991 and 2007	63 - 57



JAMAICA		MONTserrat	
<b>GENERAL INFORMATION</b>		<b>GENERAL INFORMATION</b>	
Total area (square kilometres), 2009	10,990	Total area (square kilometres), 2009	100
Agricultural area (as a percentage of total area), 2009	41	Agricultural area (as a percentage of total area), 2009	30
Population (1,000 inhabitants), 2010	2,741	Population (1,000 inhabitants), 2010	6
Labour force (1,000 workers), 2010	1,224	Labour force (1,000 workers), 2010	3
Women in labour force (as a percentage of total labour force), 2010	44	Women in labour force (as a percentage of total labour force), 2010	33
Labour force in agriculture (as a percentage of total labour force), 2010	17	Labour force in agriculture (as a percentage of total labour force), 2010	33
Women in agriculture (as a percentage of labour force in agriculture), 2010	28	Women in agriculture (as a percentage of labour force in agriculture), 2010	–
Gross Domestic Product (GDP) (in millions of US\$), 2010	13,776	Gross Domestic Product (GDP) (in millions of US\$), 2009	53
GDP by economic activity (as a percentage of GDP), 2009 (agriculture / industry / services)	6/21/73	GDP by economic activity (as a percentage of GDP), 2009 (agriculture / industry / services)	2/18/80
<b>COMMODITY EXPORT DEPENDENCE</b>		<b>COMMODITY EXPORT DEPENDENCE</b>	
Commodity exports (in millions of US\$ and as a percentage of merchandise exports), 2009-2010	1,093 (83%)	Commodity exports (in millions of US\$ and as a percentage of merchandise exports), 2009-2010	0.9 (50%)
Commodity exports (as a percentage of GDP), 2009-2010	8	Commodity exports (as a percentage of GDP), 2008-2009	3
Exports by commodity groups (as a percentage of total commodity exports), 2009-2010		Exports by commodity groups (as a percentage of total commodity exports), 2009-2010	
All food items	29	All food items	9
Agricultural raw materials	–	Agricultural raw materials	–
Fuels	19	Fuels	–
Ores, metals, precious stones and non-monetary gold	53	Ores, metals, precious stones and non-monetary gold	91
Three leading commodity exports (as a percentage of commodity exports), 2009-2010	77	Three leading commodity exports (as a percentage of commodity exports), 2009-2010	97
(285) Aluminium ores and concentrates (incl. alumina)	51	(273) Stone, sand and gravel	81
(334) Petroleum oils or bituminous minerals > 70 % oil	19	(112) Alcoholic beverages	8
(112) Alcoholic beverages	7	(277) Natural abrasives, n.e.s. (incl. industri. diamonds)	8
Leading destination markets for commodity exports (as a percentage of commodity exports), 2009-2010	86	Leading destination markets for commodity exports (as a percentage of commodity exports), 2009-2010	96
United States, EU (27), Canada, Norway, Iceland	47/18/13/5/3	Anguilla, EU (27), British Virgin Islands, Netherlands Antilles, United States	48/18/13/10/7
Export concentration ratio	(2000) 0.5436 (2010) 0.4736	Export concentration ratio	(2000) 0.1754 (2010) 0.3671
Membership in international commodity bodies	ISO	Membership in international commodity bodies	–
<b>FOOD SECURITY</b>		<b>FOOD SECURITY</b>	
Commodity import value (in millions of US\$ and as a percentage of merchandise import value), 2009-2010	2,485 (49%)	Commodity import value (in millions of US\$ and as a percentage of merchandise import value), 2009-2010	18 (63%)
Net food imports (in millions of US\$), 2010	610	Net food imports (in millions of US\$), 2010	n.a.
MDG 1.1: Percentage of population below 1US\$ (PPP) per day, 1990/92 and 2007/09	0.2 - 0.2	MDG 1.1: Percentage of population below 1US\$ (PPP) per day, 1990/92 and 2007/09	n.a.
MDG 1.9: Percentage of the population undernourished, 1991 and 2007	11 - 5	MDG 1.9: Percentage of the population undernourished, 1991 and 2007	n.a.





NETHERLANDS ANTILLES		SAINT KITTS AND NEVIS	
GENERAL INFORMATION		GENERAL INFORMATION	
Total area (square kilometres), 2009	800	Total area (square kilometres), 2009	260
Agricultural area (as a percentage of total area), 2009	10	Agricultural area (as a percentage of total area), 2009	21
Population (1,000 inhabitants), 2010	201	Population (1,000 inhabitants), 2010	52
Labour force (1,000 workers), 2010	98	Labour force (1,000 workers), 2010	23
Women in labour force (as a percentage of total labour force), 2010	49	Women in labour force (as a percentage of total labour force), 2010	39
Labour force in agriculture (as a percentage of total labour force), 2010	–	Labour force in agriculture (as a percentage of total labour force), 2010	22
Women in agriculture (as a percentage of labour force in agriculture), 2010	–	Women in agriculture (as a percentage of labour force in agriculture), 2010	20
Gross Domestic Product (GDP) (in millions of US\$), 2010	4,242	Gross Domestic Product (GDP) (in millions of US\$), 2010	550
GDP by economic activity (as a percentage of GDP), 2009 (agriculture / industry / services)	1/16/83	GDP by economic activity (as a percentage of GDP), 2009 (agriculture / industry / services)	2/20/77
COMMODITY EXPORT DEPENDENCE		COMMODITY EXPORT DEPENDENCE	
Commodity exports (in millions of US\$ and as a percentage of merchandise exports), 2009-2010	659 (83%)	Commodity exports (in millions of US\$ and as a percentage of merchandise exports), 2009-2010	2.5 (6%)
Commodity exports (as a percentage of GDP), 2009-2010	16	Commodity exports (as a percentage of GDP), 2009-2010	0.5
Exports by commodity groups (as a percentage of total commodity exports), 2009-2010		Exports by commodity groups (as a percentage of total commodity exports), 2009-2010	
All food items	3	All food items	89
Agricultural raw materials	1	Agricultural raw materials	3
Fuels	91	Fuels	1
Ores, metals, precious stones and non-monetary gold	5	Ores, metals, precious stones and non-monetary gold	7
Three leading commodity exports (as a percentage of commodity exports), 2009-2010	91	Three leading commodity exports (as a percentage of commodity exports), 2009-2010	65
(334) Petroleum oils or bituminous minerals > 70 % oil	83	(112) Alcoholic beverages	40
(335) Residual petroleum products, n.e.s., related mater.	4	(111) Non-alcoholic beverages, n.e.s.	15
(971) Gold, non-monetary (excluding gold ores and concentrates)	4	(022) Milk, cream and milk products (excluding butter, cheese)	10
Leading destination markets for commodity exports (as a percentage of commodity exports), 2009-2010	62	Leading destination markets for commodity exports (as a percentage of commodity exports), 2009-2010	68
United States, Guatemala, Singapore, EU (27), Dominican Republic	22/13/13/7/7	United States, Dominica, Saint Lucia, EU (27), Saint Vincent and the Grenadines	23/16/16/8/8
Export concentration ratio	(2000) 0.6897 (2010) 0.6901	Export concentration ratio	(2000) 0.5236 (2010) 0.4531
Membership in international commodity bodies	–	Membership in international commodity bodies	–
FOOD SECURITY		FOOD SECURITY	
Commodity import value (in millions of US\$ and as a percentage of merchandise import value), 2009-2010	1,602 (62%)	Commodity import value (in millions of US\$ and as a percentage of merchandise import value), 2009-2010	76 (29%)
Net food imports (in millions of US\$), 2010	161	Net food imports (in millions of US\$), 2010	41
MDG 1.1: Percentage of population below 1US\$ (PPP) per day, 1990/92 and 2007/09	n.a.	MDG 1.1: Percentage of population below 1US\$ (PPP) per day, 1990/92 and 2007/09	n.a.
MDG 1.9: Percentage of the population undernourished, 1991 and 2007	8 - 5	MDG 1.9: Percentage of the population undernourished, 1991 and 2007	11 - 16



SAINT LUCIA		SAINT VINCENT AND THE GRENADINES	
<b>GENERAL INFORMATION</b>		<b>GENERAL INFORMATION</b>	
Total area (square kilometres), 2009	620	Total area (square kilometres), 2009	390
Agricultural area (as a percentage of total area), 2009	18	Agricultural area (as a percentage of total area), 2009	26
Population (1,000 inhabitants), 2010	174	Population (1,000 inhabitants), 2010	109
Labour force (1,000 workers), 2010	84	Labour force (1,000 workers), 2010	54
Women in labour force (as a percentage of total labour force), 2010	42	Women in labour force (as a percentage of total labour force), 2010	41
Labour force in agriculture (as a percentage of total labour force), 2010	20	Labour force in agriculture (as a percentage of total labour force), 2010	20
Women in agriculture (as a percentage of labour force in agriculture), 2010	24	Women in agriculture (as a percentage of labour force in agriculture), 2010	27
Gross Domestic Product (GDP) (in millions of US\$), 2010	973	Gross Domestic Product (GDP) (in millions of US\$), 2010	561
GDP by economic activity (as a percentage of GDP), 2009 (agriculture / industry / services)	4/16/80	GDP by economic activity (as a percentage of GDP), 2009 (agriculture / industry / services)	7/23/70
<b>COMMODITY EXPORT DEPENDENCE</b>		<b>COMMODITY EXPORT DEPENDENCE</b>	
Commodity exports (in millions of US\$ and as a percentage of merchandise exports), 2009-2010	103 (63%)	Commodity exports (in millions of US\$ and as a percentage of merchandise exports), 2009-2010	10 (23%)
Commodity exports (as a percentage of GDP), 2009-2010	11	Commodity exports (as a percentage of GDP), 2009-2010	2
Exports by commodity groups (as a percentage of total commodity exports), 2009-2010		Exports by commodity groups (as a percentage of total commodity exports), 2009-2010	
All food items	50	All food items	94
Agricultural raw materials	–	Agricultural raw materials	2
Fuels	46	Fuels	1
Ores, metals, precious stones and non-monetary gold	4	Ores, metals, precious stones and non-monetary gold	3
Three leading commodity exports (as a percentage of commodity exports), 2009-2010	87	Three leading commodity exports (as a percentage of commodity exports), 2009-2010	64
(334) Petroleum oils or bituminous minerals > 70 % oil	43	(046) Meal and flour of wheat and flour of meslin	27
(057) Fruits and nuts (excluding oil nuts), fresh or dried	30	(057) Fruits and nuts (excluding oil nuts), fresh or dried	23
(112) Alcoholic beverages	14	(054) Vegetables	14
Leading destination markets for commodity exports (as a percentage of commodity exports), 2009-2010	84	Leading destination markets for commodity exports (as a percentage of commodity exports), 2009-2010	80
EU (27), Republic of Korea, Trinidad and Tobago, United States, Barbados	44/14/13/8/5	Saint Lucia, Trinidad and Tobago, Barbados, EU (27), Antigua and Barbuda	25/24/12/10/9
Export concentration ratio	(2000) 0.5034 (2010) 0.3037	Export concentration ratio	(2000) 0.3840 (2010) 0.2551
Membership in international commodity bodies	–	Membership in international commodity bodies	–
<b>FOOD SECURITY</b>		<b>FOOD SECURITY</b>	
Commodity import value (in millions of US\$ and as a percentage of merchandise import value), 2009-2010	462 (83%)	Commodity import value (in millions of US\$ and as a percentage of merchandise import value), 2009-2010	162 (46%)
Net food imports (in millions of US\$), 2010	- 18	Net food imports (in millions of US\$), 2010	71
MDG 1.1: Percentage of population below 1US\$ (PPP) per day, 1990/92 and 2007/09	21 - n.a.	MDG 1.1: Percentage of population below 1US\$ (PPP) per day, 1990/92 and 2007/09	n.a.
MDG 1.9: Percentage of the population undernourished, 1991 and 2007	9 - 8	MDG 1.9: Percentage of the population undernourished, 1991 and 2007	16 - 5



TRINIDAD AND TOBAGO		TURKS AND CAICOS ISLANDS	
GENERAL INFORMATION		GENERAL INFORMATION	
Total area (square kilometres), 2009	5,130	Total area (square kilometres), 2009	950
Agricultural area (as a percentage of total area), 2009	11	Agricultural area (as a percentage of total area), 2009	1
Population (1,000 inhabitants), 2010	1,341	Population (1,000 inhabitants), 2010	38
Labour force (1,000 workers), 2010	714	Labour force (1,000 workers), 2010	17
Women in labour force (as a percentage of total labour force), 2010	45	Women in labour force (as a percentage of total labour force), 2010	41
Labour force in agriculture (as a percentage of total labour force), 2010	7	Labour force in agriculture (as a percentage of total labour force), 2010	18
Women in agriculture (as a percentage of labour force in agriculture), 2010	17	Women in agriculture (as a percentage of labour force in agriculture), 2010	33
Gross Domestic Product (GDP) (in millions of US\$), 2010	22,181	Gross Domestic Product (GDP) (in millions of US\$), 2009	1,161
GDP by economic activity (as a percentage of GDP), 2009 (agriculture / industry / services)	-/51/49	GDP by economic activity (as a percentage of GDP), 2009 (agriculture / industry / services)	1/22/77
COMMODITY EXPORT DEPENDENCE		COMMODITY EXPORT DEPENDENCE	
Commodity exports (in millions of US\$ and as a percentage of merchandise exports), 2009-2010	6,983 (73%)	Commodity exports (in millions of US\$ and as a percentage of merchandise exports), 2009-2010	5.8 (35%)
Commodity exports (as a percentage of GDP), 2009-2010	32	Commodity exports (as a percentage of GDP), 2008-2009	1
Exports by commodity groups (as a percentage of total commodity exports), 2009-2010		Exports by commodity groups (as a percentage of total commodity exports), 2009-2010	
All food items	4	All food items	90
Agricultural raw materials	–	Agricultural raw materials	3
Fuels	92	Fuels	1
Ores, metals, precious stones and non-monetary gold	4	Ores, metals, precious stones and non-monetary gold	7
Three leading commodity exports (as a percentage of commodity exports), 2009-2010	89	Three leading commodity exports (as a percentage of commodity exports), 2009-2010	76
(343) Natural gas, whether or not liquefied	45	(03) Fishery products	68
(334) Petroleum oils or bituminous minerals > 70 % oil	28	(288) Non-ferrous base metal waste and scrap, n.e.s.	5
(333) Petroleum oils, oils from bitumin. materials, crude	16	(048) Cereal preparations, flour of fruits or vegetables	3
Leading destination markets for commodity exports (as a percentage of commodity exports), 2009-2010	80	Leading destination markets for commodity exports (as a percentage of commodity exports), 2009-2010	99
United States, EU (27), Jamaica, Barbados, Suriname	54/14/7/3/2	United States, Ethiopia, EU (27), Guyana, Mexico	91/3/2/2/1
Export concentration ratio	(2000) 0.3979 (2010) 0.3676	Export concentration ratio	(2000) 0.2691 (2010) 0.1933
Membership in international commodity bodies	ICCO, ISO, ITTO	Membership in international commodity bodies	–
FOOD SECURITY		FOOD SECURITY	
Commodity import value (in millions of US\$ and as a percentage of merchandise import value), 2009-2010	2,957 (44%)	Commodity import value (in millions of US\$ and as a percentage of merchandise import value), 2009-2010	116 (33%)
Net food imports (in millions of US\$), 2010	587	Net food imports (in millions of US\$), 2010	49
MDG 1.1: Percentage of population below 1US\$ (PPP) per day, 1990/92 and 2007/09	4.2 - n.a.	MDG 1.1: Percentage of population below 1US\$ (PPP) per day, 1990/92 and 2007/09	n.a.
MDG 1.9: Percentage of the population undernourished, 1991 and 2007	11 - 11	MDG 1.9: Percentage of the population undernourished, 1991 and 2007	n.a.